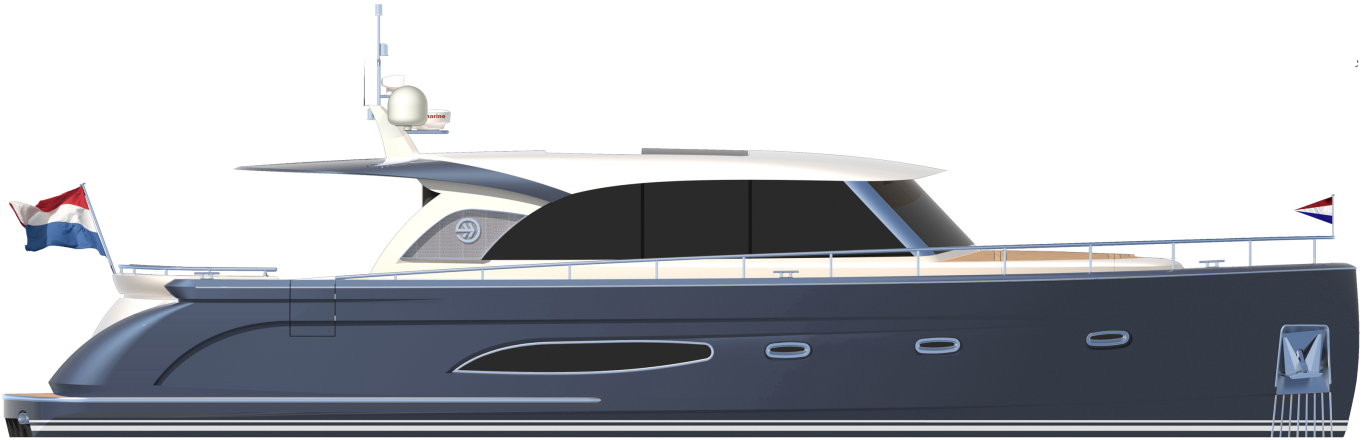


COMMANDER



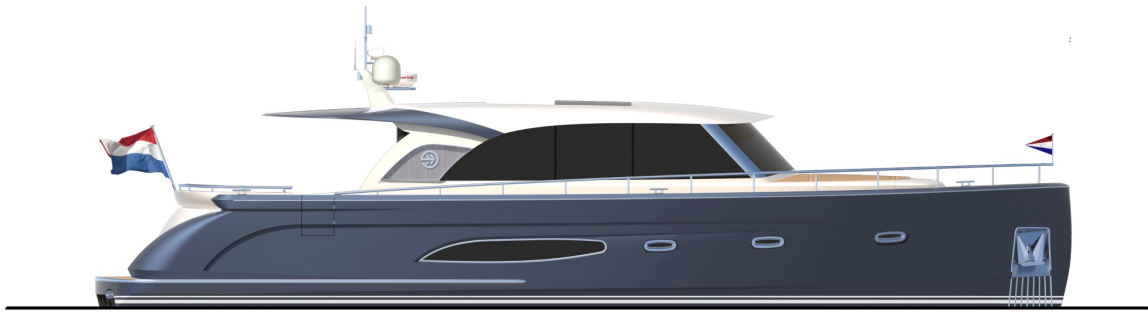
SPECIFICATIONS

Commander 54

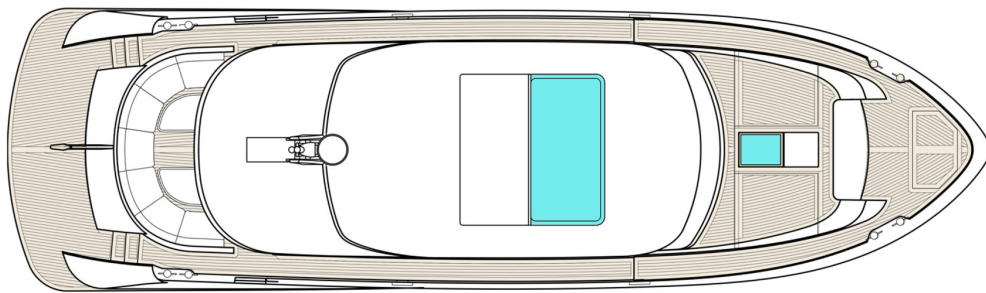
Lenght over all	: 16,56m
Max Speed	: 10 knots
Cruising speed	: 8.5 knots
Beam	: 4,78m
Fuel Tank	: 2000ltr
Engine(s)	: 2x Volvo-Penta D4, 175hp each
Range at cruising speed	: 500 nm @8.5 kts
Length water line	: 16.30m
Draft	: 1,25m
Displacement	: 35 Tons
Hull material	: Steel
Superstructure material	: Steel
Hull Shape	: Roud Bilge
Classification	: CE-A
Shaft & Propeller	: Twin conventional shaft drives
Generator(s)	: 1x 9.5kW, 230V, 50Hz
Fresh water tank	: 1.100ltr
Holding tank capacity	: 400ltr
Cabins	: 2
Naval architect	: Trimm Design
Exterior design	: Trimm Design
Interior design	: Trimm Design



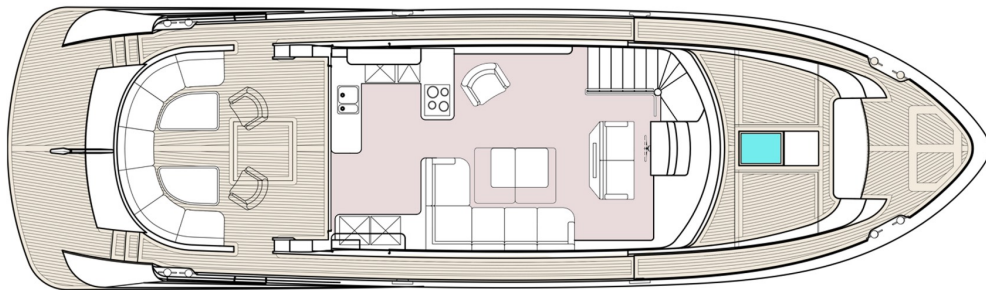
COMMANDER



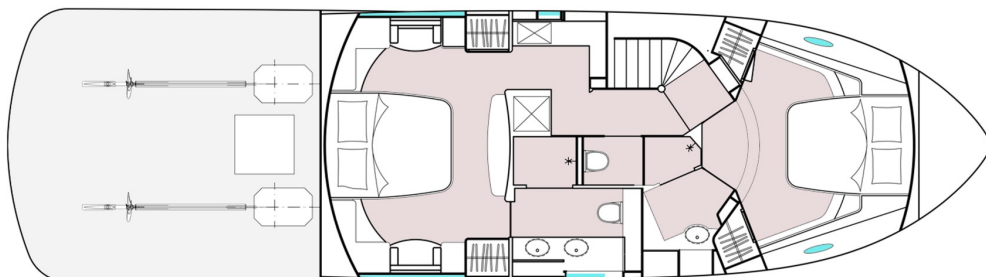
PROFILE



TOP VIEW



MAIN DECK



LOWER DECK



Holterman Shipyard T. +31 522 254 433
Zomerdijk 28 E. info@holtermanshipyard.nl
7942 JT Meppel, The Netherlands W. www.holtermanshipyard.nl