

XTREME



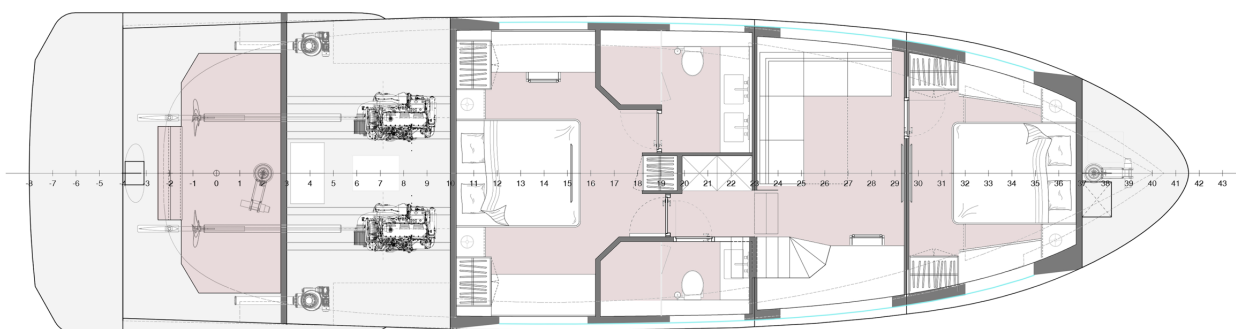
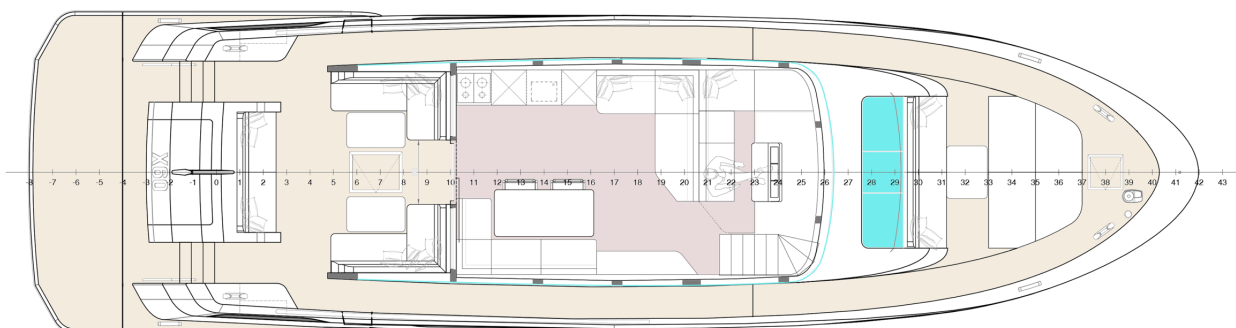
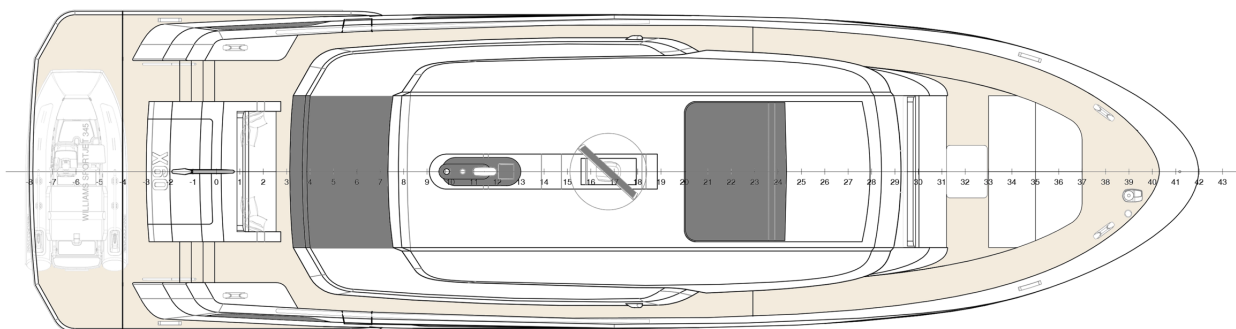
SPECIFICATIONS

Xtreme 65

Lenght over all	: 20,00
Max Speed	: 12 knots
Cruising speed	: 8.5 knots
Beam	: 5,53m
Fuel Tank	: 5154L
Engine(s)	: 2x Volvo-Penta D6, 300hp
Range at cruising speed	: 1350 nm @8.5 kts
Length water line	: 17,68m
Draft	: 1,25m
Displacement	: 44,31 tons
Hull material	: Steel
Superstructure material	: Steel
Hull Shape	: Round bilge
Classification	: CE-A
Shaft & Propeller	: Twin conventional shaft drives
Bow thruster	: 1x Electric 250KGF/24V
Generator(s)	: 1x 11kW, 230V, 50Hz
Fresh water tank	: 2097L
Holding tank capacity	: 547L
Cabins:	: 2/3
Naval architect	: Trimm Design
Exterior design	: Bernd Weel
Interior design	: Kitty van der Kamp



XTREME



Holterman Shipyard T. +31 522 254 433
Zomerdijk 28 E. info@holtermanshipyard.nl
7942 JT Meppel, The Netherlands W. www.holtermanshipyard.nl