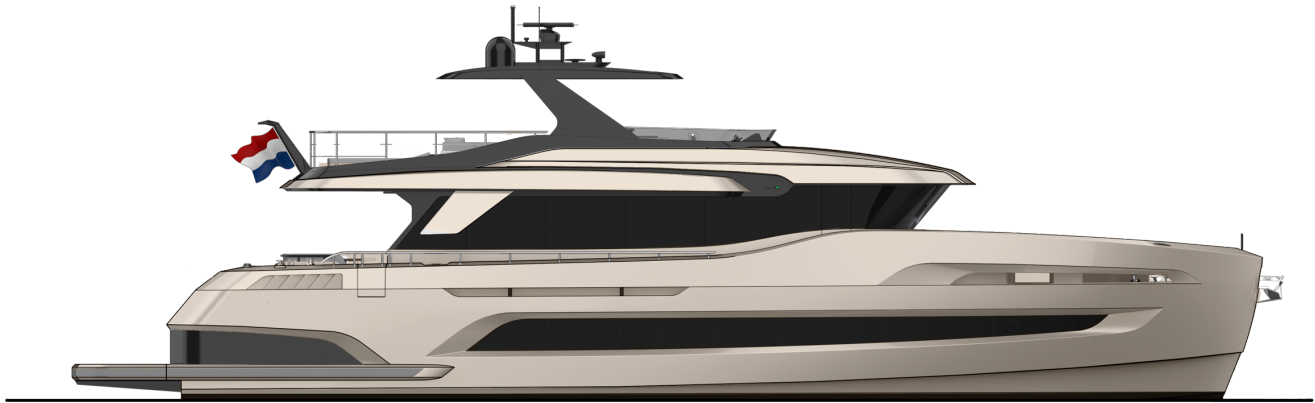


XTREME



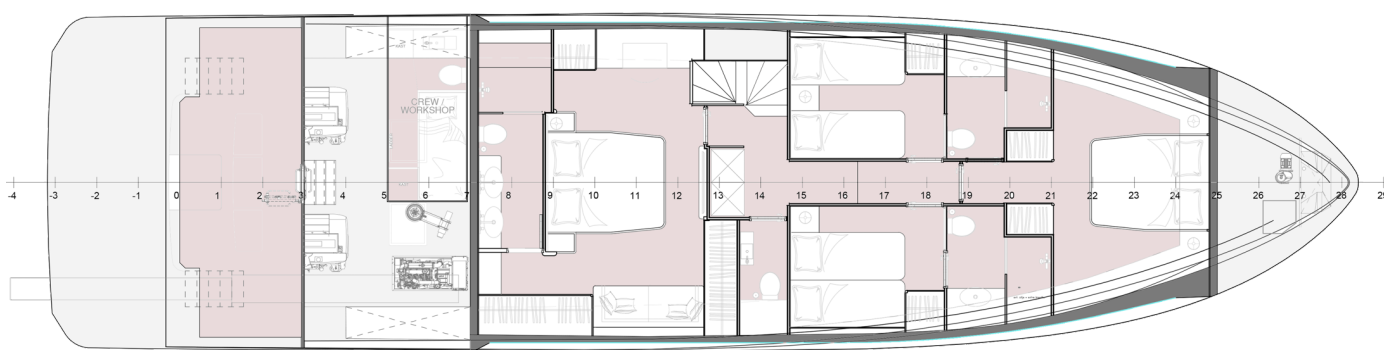
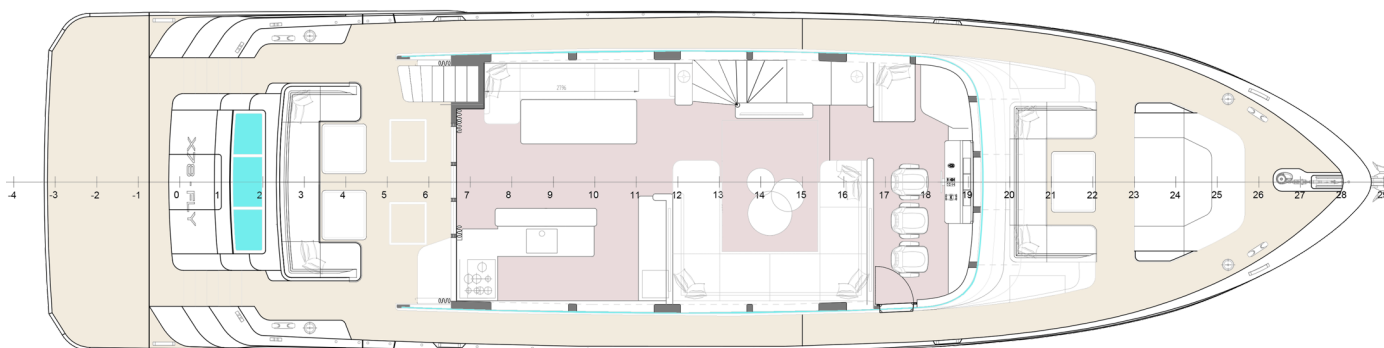
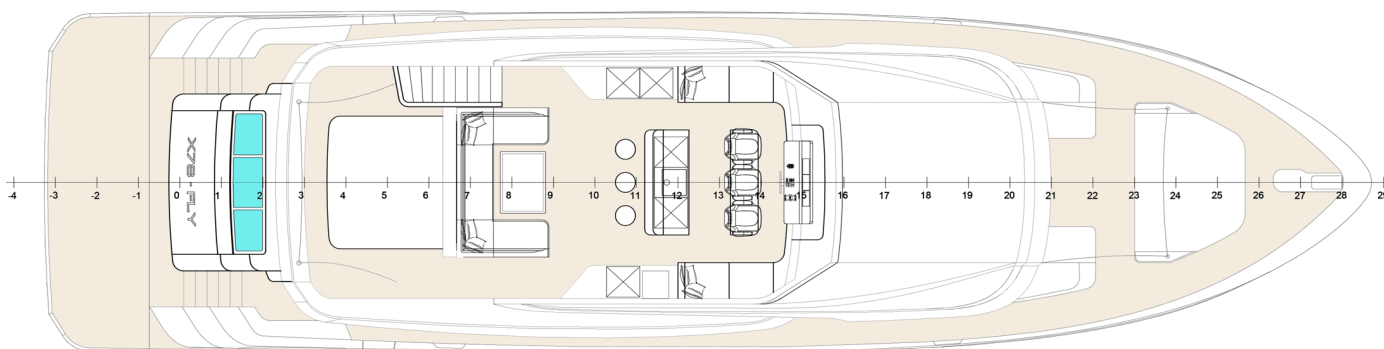
SPECIFICATIONS

Xtreme 78 Flybridge

Lenght over all	: 23,96m
Max Speed	: 30 knots
Beam	: 6,18m
Fuel Tank	: 6.000ltr
Engine(s)	: 2x Volvo Penta IPS 1350, 1000hp each
Range at cruising speed	: 440 nm @20 kts
Length water line	: 20,91m
Draft	: 1,45m
Displacement	: 58 tons
Hull material	: Aluminium
Superstructure material	: Aluminium
Hull Shape	: Deep-V
Classification	: CE-A
Cruising speed	: 20 knots
Shaft & Propeller	: Volvo-Penta electric IPS drive
Bow thruster	: 1x Electric 250KGF 24V
Generator(s)	: 1x 22.5kW, 230V, 50Hz
Fresh water tank	: 2.000ltr
Holding tank capacity	: 1.500ltr
Cabins	: 4
Naval architect	: Sea Level/DianaYachtDesign
Exterior design	: Bernd Weel
Interior design	: Kitty van der Kamp



XTREME



Holterman Shipyard T. +31 522 254 433
Zomerdijk 28 E. info@holtermanshipyard.nl
7942 JT Meppel, The Netherlands W. www.holtermanshipyard.nl